

测试报告

No. CANEC1001909401

日期: 2010年05月14日 第1页,共5页

广州市致拓科技有限公司
中国广州市海珠区江南大道中218号南座608

以下测试之样品是由申请者所提供及确认:

ProMark 记号笔墨水

SGS工作编号 : 12504553 - GZ
供应商 : 广州市锋明电子科技有限公司
样品接收日期 : 2010年05月07日
测试周期 : 2010年05月07日 - 2010年05月12日
测试要求 : 根据客户要求测试
测试方法 : 请参见下一页
测试结果 : 请参见下一页
结论 : 基于所送样品进行的测试, 测试结果与欧盟RoHS指令2002/95/EC以及后续修正指令的要求相符。

通标标准技术服务有限公司
授权签名



Annie Liang梁小芬
批准签署人

备注: 根据客户申请, SGS出具了此中文报告, 英文版本可根据客户要求提供. (The Chinese test report is issued according to the applicant's request. The English version is available from SGS if further needed)

This document is issued by the Company subject to its General Conditions of Service printed overleaf, available on request or accessible at http://www.sgs.com/terms_and_conditions.htm and, for electronic format documents, subject to Terms and Conditions for Electronic Documents at www.sgs.com/terms_e-document.htm. Attention is drawn to the limitation of liability, indemnification and jurisdiction issues defined therein. Any holder of this document is advised that information contained hereon reflects the Company's findings at the time of its preparation only and within the limits of Client's instructions, if any. The Company's sole responsibility is to its Client and this document does not exonerate parties to a transaction from exercising all their rights and obligations under the transaction documents. This document cannot be reproduced except in full, without prior written approval of the Company. Any unauthorized alteration, forgery or falsification of the content or appearance of this document is unlawful and offenders may be prosecuted to the fullest extent of the law. Unless otherwise stated, the results shown in this test report refer only to the sample(s) tested.

测试报告

No. CANEC1001909401

日期: 2010年05月14日 第2页,共5页

测试结果:

样品1 ID : CAN10-019094.001
 样品1描述 : 绿色油墨 (半成品)

RoHS 指令 2002/95/EC

测试项目	单位	测试方法 (参考)	测试结果	MDL	限值
镉 (Cd)	mg/kg	IEC 62321:2008, ICP-OES	N.D.	2	100
铅 (Pb)	mg/kg	IEC 62321:2008, ICP-OES	N.D.	2	1000
汞 (Hg)	mg/kg	IEC 62321:2008, ICP-OES	N.D.	2	1000
碱性溶液萃取测六价铬(Cr VI)	mg/kg	IEC 62321:2008, UV-Vis	N.D.	2	1000
多溴联苯(PBBs)之和	mg/kg	-	N.D.	-	1000
单溴联苯	mg/kg	IEC 62321:2008, GC-MS	N.D.	5	
二溴联苯	mg/kg	IEC 62321:2008, GC-MS	N.D.	5	
三溴联苯	mg/kg	IEC 62321:2008, GC-MS	N.D.	5	
四溴联苯	mg/kg	IEC 62321:2008, GC-MS	N.D.	5	
五溴联苯	mg/kg	IEC 62321:2008, GC-MS	N.D.	5	
六溴联苯	mg/kg	IEC 62321:2008, GC-MS	N.D.	5	
七溴联苯	mg/kg	IEC 62321:2008, GC-MS	N.D.	5	
八溴联苯	mg/kg	IEC 62321:2008, GC-MS	N.D.	5	
九溴联苯	mg/kg	IEC 62321:2008, GC-MS	N.D.	5	
十溴联苯	mg/kg	IEC 62321:2008, GC-MS	N.D.	5	
多溴二苯醚(PBDEs)之和	mg/kg	-	N.D.	-	1000
单溴二苯醚	mg/kg	IEC 62321:2008, GC-MS	N.D.	5	
二溴二苯醚	mg/kg	IEC 62321:2008, GC-MS	N.D.	5	
三溴二苯醚	mg/kg	IEC 62321:2008, GC-MS	N.D.	5	
四溴二苯醚	mg/kg	IEC 62321:2008, GC-MS	N.D.	5	
五溴二苯醚	mg/kg	IEC 62321:2008, GC-MS	N.D.	5	
六溴二苯醚	mg/kg	IEC 62321:2008, GC-MS	N.D.	5	
七溴二苯醚	mg/kg	IEC 62321:2008, GC-MS	N.D.	5	
八溴二苯醚	mg/kg	IEC 62321:2008, GC-MS	N.D.	5	
九溴二苯醚	mg/kg	IEC 62321:2008, GC-MS	N.D.	5	
十溴二苯醚	mg/kg	IEC 62321:2008, GC-MS	N.D.	5	

注释:

1. mg/kg = ppm
2. N.D. = 未检出 (< MDL)
3. MDL = 方法检测限
4. "-" = 未规定
5. 多溴二苯醚 = 多溴联苯醚

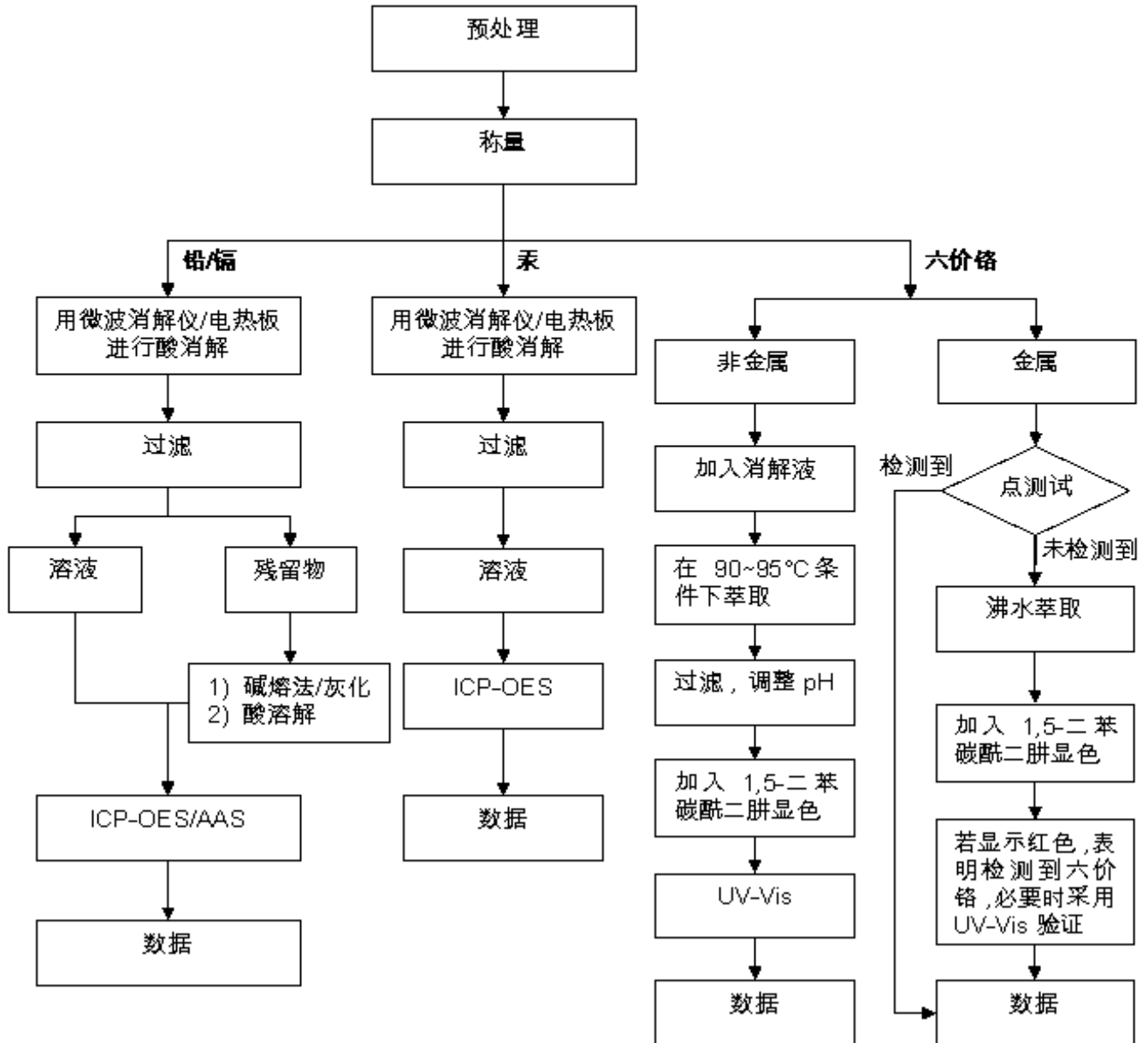
备注: 所示结果为烘干样品总重量中的含量。

This document is issued by the Company subject to its General Conditions of Service printed overleaf, available on request or accessible at http://www.sgs.com/terms_and_conditions.htm and, for electronic format documents, subject to Terms and Conditions for Electronic Documents at www.sgs.com/terms_e-document.htm. Attention is drawn to the limitation of liability, indemnification and jurisdiction issues defined therein. Any holder of this document is advised that information contained hereon reflects the Company's findings at the time of its preparation only, and within the limits of Client's instructions, if any. The Company's sole responsibility is to its Client and this document does not exonerate parties to a transaction from exercising all their rights and obligations under the transaction documents. This document cannot be reproduced except in full, without prior written approval of the Company. Any unauthorized alteration, forgery or falsification of the content or appearance of this document is unlawful and offenders may be prosecuted to the fullest extent of the law. Unless otherwise stated, the results shown in this test report refer only to the sample(s) tested.

附件

- 1) 分析人员: 汪丹
- 2) 项目负责人: 余奕东

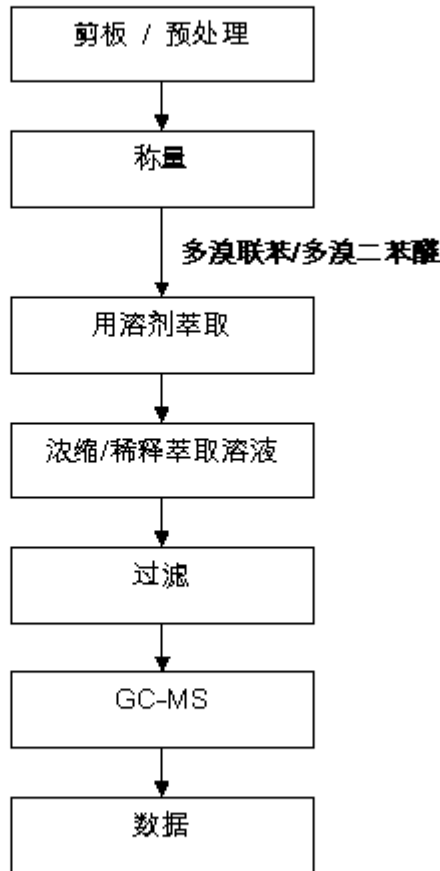
测试流程图



This document is issued by the Company subject to its General Conditions of Service printed overleaf, available on request or accessible at http://www.sgs.com/terms_and_conditions.htm and, for electronic format documents, subject to Terms and Conditions for Electronic Documents at www.sgs.com/terms_e-document.htm. Attention is drawn to the limitation of liability, indemnification and jurisdiction issues defined therein. Any holder of this document is advised that information contained hereon reflects the Company's findings at the time of its preparation only, and within the limits of Client's instructions, if any. The Company's sole responsibility is to its Client and this document does not exonerate parties to a transaction from exercising all their rights and obligations under the transaction documents. This document cannot be reproduced except in full, without prior written approval of the Company. Any unauthorized alteration, forgery or falsification of the content or appearance of this document is unlawful and offenders may be prosecuted to the fullest extent of the law. Unless otherwise stated, the results shown in this test report refer only to the sample(s) tested.

测试流程图

- 1) 分析人员: 余晓璐
- 2) 项目负责人: 杨伟兴



This document is issued by the Company subject to its General Conditions of Service printed overleaf, available on request or accessible at http://www.sgs.com/terms_and_conditions.htm and, for electronic format documents, subject to Terms and Conditions for Electronic Documents at www.sgs.com/terms_e-document.htm. Attention is drawn to the limitation of liability, indemnification and jurisdiction issues defined therein. Any holder of this document is advised that information contained hereon reflects the Company's findings at the time of its preparation only, and within the limits of Client's instructions, if any. The Company's sole responsibility is to its Client and this document does not exonerate parties to a transaction from exercising all their rights and obligations under the transaction documents. This document cannot be reproduced except in full, without prior written approval of the Company. Any unauthorized alteration, forgery or falsification of the content or appearance of this document is unlawful and offenders may be prosecuted to the fullest extent of the law. Unless otherwise stated, the results shown in this test report refer only to the sample(s) tested.

测试报告

No. CANEC1001909401

日期: 2010年05月14日 第5页,共5页

样品照片:



此照片仅限于随SGS正本报告使用
*** 报告完 ***

This document is issued by the Company subject to its General Conditions of Service printed overleaf, available on request or accessible at http://www.sgs.com/terms_and_conditions.htm and, for electronic format documents, subject to Terms and Conditions for Electronic Documents at www.sgs.com/terms_e-document.htm. Attention is drawn to the limitation of liability, indemnification and jurisdiction issues defined therein. Any holder of this document is advised that information contained hereon reflects the Company's findings at the time of its preparation only and within the limits of Client's instructions, if any. The Company's sole responsibility is to its Client and this document does not exonerate parties to a transaction from exercising all their rights and obligations under the transaction documents. This document cannot be reproduced except in full, without prior written approval of the Company. Any unauthorized alteration, forgery or falsification of the content or appearance of this document is unlawful and offenders may be prosecuted to the fullest extent of the law. Unless otherwise stated, the results shown in this test report refer only to the sample(s) tested.